

Reprint Series
21 October 1994, Volume 266, pp. 416–419

SCIENCE

Marked Post-18th Century Environmental Change in High-Arctic Ecosystems

Marianne S. V. Douglas,*† John P. Smol, and Weston Blake Jr.

Marked Post-18th Century Environmental Change in High-Arctic Ecosystems

Marianne S. V. Douglas,*† John P. Smol, Weston Blake Jr.

Paleolimnological data from three high-arctic ponds on Cape Herschel, Ellesmere Island, Canada, show that diatom assemblages were relatively stable over the last few millennia but then experienced unparalleled changes beginning in the 19th century. The environmental factors causing these assemblage shifts may be related to recent climatic warming. Regardless of the cause, the biota of these isolated and seemingly pristine ponds have changed dramatically in the recent past and any hopes of cataloging natural assemblages may already be fruitless.

Anthropogenic impacts such as acid haze (1), acid snow (2), and other pollutants (3, 4) continue to encroach on the high Arctic, and the effects of global changes, such as the predicted greenhouse warming, are expected to be amplified in polar regions (5). Because of the absence of long-term monitoring data, it is not directly possible to determine background variability or to track the trajectories of past environmental changes.

In consideration of the paucity of long-term monitoring data for the Arctic (6), indirect proxy methods must be used to infer past environmental conditions. The abundance of lakes and ponds in high-arctic regions makes paleolimnological approaches powerful tools to assist interpretations of environmental change (7). In this report, we analyze diatom assemblages preserved in

high-arctic sediments to document pond ontogeny in this extreme environment.

Diatoms are the most widely used group of biological indicators in paleolimnological research, and they are rapidly becoming a primary indicator group for several large-scale and long-term biomonitoring programs of environmental change (8). Diatoms are abundant, ecologically diverse, and are known to respond, in a quantifiable manner, to environmental changes. Moreover, the siliceous cell walls (frustules) of diatoms are usually well preserved in lake and pond sediments.

Ellesmere Island is the northernmost island in the Canadian Arctic archipelago (Fig. 1). Cape Herschel (78°37'N, 74°42'W), located on the east-central coast of the island facing Smith Sound, is a rugged peninsula (about 2 km by 5 km) of high relief (0 to 285 m above sea level) composed of granitic bedrock overlain by small patches of calcareous till (9). No glaciers now occupy the cape, but small patches of snow persist throughout the summer, and glaciers are present to the immediate north and south. As in other high-arctic locations, vegetation is scant, consisting mainly of mosses, grasses,

M. S. V. Douglas and J. P. Smol, Paleoecological Environmental Assessment and Research Laboratory, Department of Biology, Queen's University, Kingston, Ontario K7L 3N6, Canada.

W. Blake Jr., Geological Survey of Canada, 601 Booth Street, Ottawa, Ontario, K1A 0E8, Canada.

*To whom correspondence should be addressed.

†Present address: Department of Geology and Geography, University of Massachusetts, Amherst, MA 01003, USA.

sedges, *Salix*, and a few additional flowering plants (10).

Cape Herschel is characterized by an abundance of ponds, 36 of which have been monitored for 4 years (11–17). The ponds are typically shallow (<2 m), clear, oligotrophic, and freshwater. Thaw typically begins in June, and freeze-up may begin in early August. Elison Lake, Camp Pond, and Col Pond were chosen for detailed study (all names are unofficial except for Elison). These sites represent a spectrum of pond types that includes the largest (Elison) and one of the smallest (Camp) ponds on the cape, and one of low elevation (Elison, at 13 m above sea level) as well as one of the highest sites (Col, at 135 m above sea level).

Frozen pond sediment cores were collected with a SIPRE (CRREL) corer (18–20) and kept frozen until they were sectioned into increments of 0.5 or 1 cm. Diatom microfossil analyses followed standard procedures; species lists, other ecological and taxonomic information, and methodologies are detailed elsewhere (12). Biogenic silica analyses (21) were used to estimate past diatom production (12). We obtained ^{14}C dates for

the basal sediments and used ^{210}Pb dating for the recent sediments. The ^{14}C dates indicate that the Elison Lake core covers 3850 ± 100 years (GSC-3170) or 4417 to 4140 calibrated years; the Camp Pond core covers 5760 ± 100 years (GSC-2990) or 6727 to 6452 calibrated years; and the Col Pond core covers at least 8000 years (22) of sediment accumulation. Contiguous ^{210}Pb dating of the recent sediments (Fig. 2) indicates that the entire unsupported ^{210}Pb inventory is contained in the upper 3 cm of the Elison Lake and Camp Pond cores and the top 4 cm of the Col Pond core, indicating an approximate date of 1850 A.D. Such low sedimentation rates are typical of arctic regions.

Several independent lines of evidence (12) clearly demonstrate that the pond sediments have not been significantly disturbed. For example, it would not be possible to record such striking successional changes in the diatom record, nor would we obtain such clear ^{210}Pb profiles (Fig. 2), if the sediment cores were mixed.

The diatom assemblage of Elison Lake was dominated by the pioneering *Fragilaria construens/pinnata* complex, having only small proportions of other taxa, through-

out all but the lake's most recent history (Fig. 2A). The amount of the moss epiphyte *Pinnularia balfouriana*, which represented about 10% of the assemblage throughout the core, increases dramatically in the post-18th century sediments, where it eventually comprised close to 90% of the diatom assemblage.

As with Elison Lake, Col Pond's diatom flora was dominated by small benthic *Fragilaria* spp. until the 19th century, where there is a complete floristic shift to a relatively diverse assemblage of *Achnanthes*, *Caloneis*, *Cymbella*, *Navicula*, *Nitzschia*, and *Kraskella* taxa (Fig. 2C). A second, replicate core contained virtually identical species shifts (12).

Camp Pond's development is dominated by *Denticula kuetzingii*, *F. pinnata*, *Nitzschia frustulum*, and other *Nitzschia* spp. (Fig. 2B). The species *F. pinnata* undergoes an interesting successional pattern, in that it dominated the pond's early development, then waned in relative abundance near a depth of 80 cm, then increased again near a depth of 20 cm, only to virtually disappear in the surface sediments (Fig. 2B). The pond's recent sediments are characterized by dramatic increases in the relative frequencies of *Achnanthes* spp.

Diatom assemblages have clearly changed in the ponds' histories; the most striking shifts began in the 19th century and continue to the present time. Relatively few changes appear to have occurred before the 19th century, and those that did likely reflect subtle, long-term limnological or environmental changes that occurred on Cape Herschel. Not surprisingly, the smallest pond (Camp) shows the greatest variability in the pre-19th century successions. Nonetheless, these changes are dwarfed by the more recent assemblage shifts where new taxa dominate.

The causes of the post-18th century diatom shifts are uncertain. We had originally assumed that the 36-pond surface-sediment diatom calibration set from Cape Herschel (13), which was augmented by present-day periphyton data (17), would assist these interpretations. However, as was evident within a few centimeters below the sediment-water interface of the cores, the pond environments have changed so substantially over the last two centuries that analogs no longer exist on the cape for the pre-19th century pond assemblages. Immigration of new taxa into the area is not a possible cause for the recent floristic changes because the diatoms that dominate the recent sediments were always present in the ponds, albeit usually at trace levels.

The recent floristic changes, which are unprecedented in the ponds' histories, occurred mainly in the 19th century, the period of potential anthropogenic impact. This impact could not be of a local nature, as the

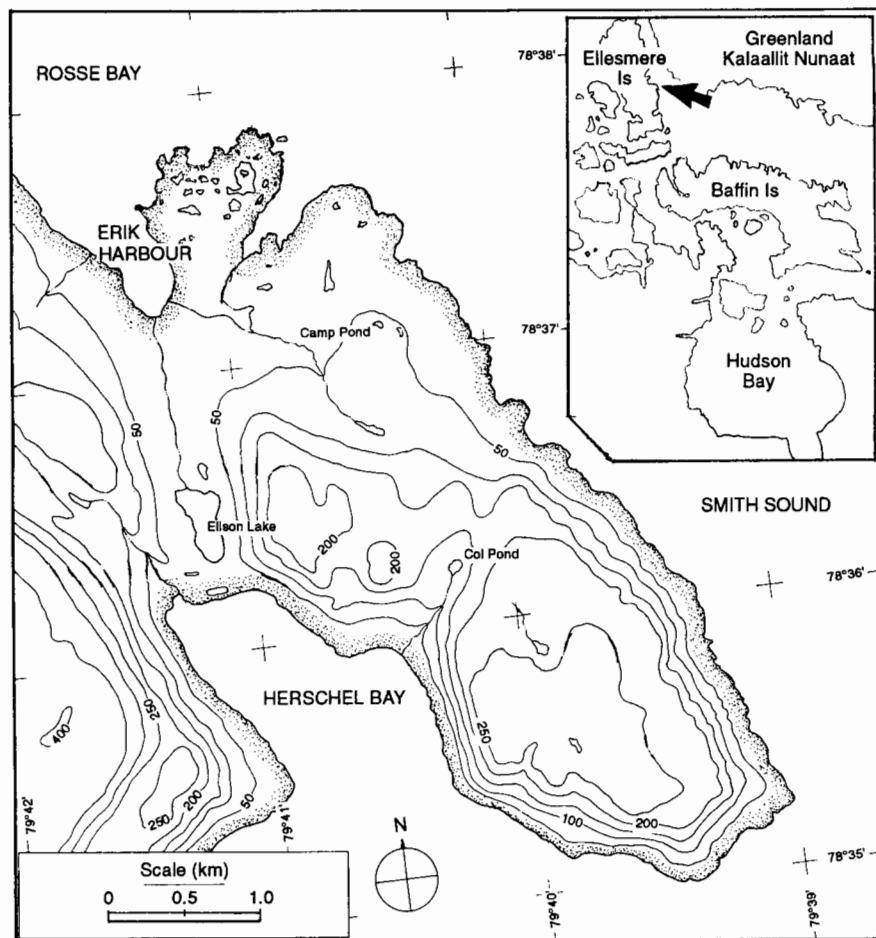


Fig. 1. Location map showing Cape Herschel and the three study ponds. Elevations are in meters above sea level.

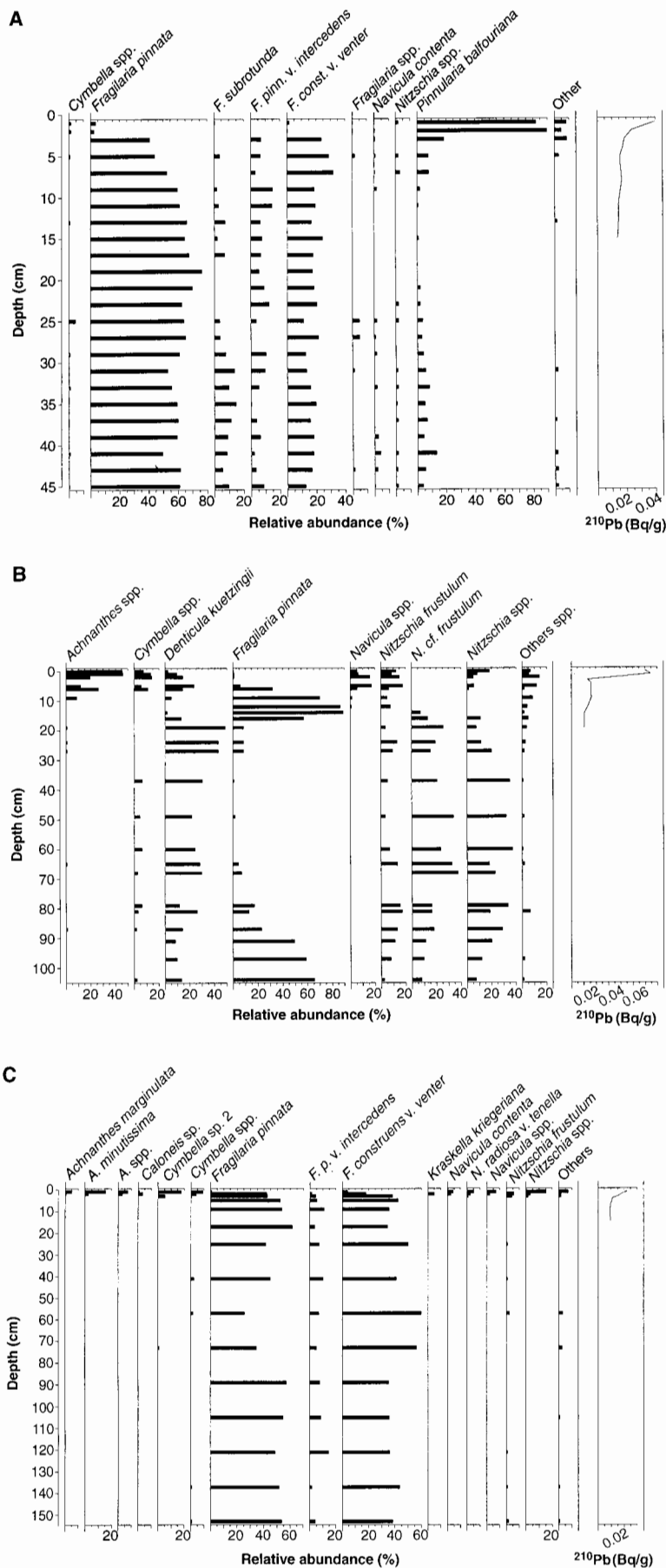


Fig. 2. Relative frequency diagrams of the dominant diatom taxa recorded in the Cape Herschel pond sediments. (A) Elison Lake, (B) Camp Pond, and (C) Col Pond. The ^{210}Pb activity in becquerels (Bq) per gram is shown at the right.

Cape Herschel peninsula was never inhabited, except for some Inuit hunting parties for short stays in camps near the sea, but this occurred at intervals over the last 3500 years (23).

Airborne pollution, transported long distances, may be affecting the ponds, and trace levels of some pollutants have been detected on Cape Herschel (3). The diatom changes, however, predate the deposition of these contaminants. Moreover, Pb-isotope analyses of the pond sediments do not indicate any anthropogenic-related Pb deposition in these ponds (24). Although the area may be receiving some acidic deposition, the ponds are still well buffered and alkaline (pH ≈ 8.5).

Areas such as Cape Herschel currently receive higher doses of ultraviolet (UV) radiation than in the past, which may affect algal assemblages (25). Changes in UV radiation, however, are believed to be recent and had not begun to increase as long as 200 years ago.

An alternative hypothesis is recent climatic warming. If climate ameliorated even slightly, it would have had a dramatic effect on the diatom assemblages. We previously speculated (11, 13) on how the diatom community at Cape Herschel would respond to climatic warming, and indeed, the diatom changes recorded in the post-18th century sediments are in agreement with these predictions. For example, with even slight warming, the length of the growing season would be significantly longer, thus allowing for the development of more diverse and complex diatom communities. This development has happened in all the study ponds. Submerged mosses would also be more abundant, and arctic moss epiphytes (12) indeed increase in relative frequencies [for example, the arctic moss epiphyte *P. balfouriana* increases dramatically in the top 3 cm of Elison Lake (Fig. 2A)]. Meanwhile, benthic *Fragilaria* spp. still dominate nearby deep, cold, ice-covered lakes (7).

Although species composition has been greatly altered, biogenic silica analyses (12) show that overall diatom abundance has not changed markedly. As shown in other regions where diatoms have been used for environmental assessments (8), species assemblage data are the most sensitive monitors of environmental change in these ponds.

Ponds are ubiquitous features of much of the Arctic. Because of their small volumes, they may be especially sensitive bellwethers of environmental change. Our data indicate

that unprecedented environmental changes, most likely related to climatic warming, have occurred since the beginning of the 19th century. Other workers, using different proxy methods, have also indicated recent climatic warming in different arctic regions (26, 27), but our data indicate an earlier (by over a century) start for these changes.

Given the absence of comparable paleolimnological studies from other high-latitude ponds, we cannot yet determine how widespread these changes have been. Any attempts at cataloging pristine arctic assemblages may already be too late, as our data indicate that high-arctic ponds have already changed.

REFERENCES AND NOTES

1. R. A. Kerr, *Science* **212**, 1013 (1981).
2. R. M. Koerner and D. Fisher, *Nature* **295**, 137 (1982).
3. R. McNeely and W. D. Gummer, *Arctic* **37**, 210 (1984).
4. L. A. Barrie et al., *Sci. Total Environ.* **122**, 1 (1992).
5. J. T. Houghton, G. J. Jenkins, J. J. Ephraums, Eds., *Climate Change: The IPCC Scientific Assessment* (Cambridge Univ. Press, Cambridge, 1990).
6. D. W. Gullet and W. R. Skinner, *The State of Canada's Climate: Temperature Change in Canada 1859-1991* (State of the Environment Rep. 92-2, Atmospheric Environment Service, Environment Canada, Ottawa, 1992).
7. J. P. Smol, *Verh. Int. Verein. Limnol.* **23**, 837 (1988).
8. S. S. Dixit, J. P. Smol, J. C. Kingston, D. F. Charles, *Environ. Sci. Technol.* **26**, 23 (1992).
9. W. Blake Jr., *Geol. Surv. Can. Pap.* **77-1C**, 107 (1977).
10. J. Bridgland and J. M. Gillett, *Can. Field Nat.* **97**, 279 (1983).
11. M. S. V. Douglas, thesis, Queen's University (1989).
12. _____, thesis, Queen's University (1993).
13. _____ and J. P. Smol, *Nova Hedwigia Z. Kryptogamenkd.* **57**, 511 (1993).
14. _____, *Arch. Hydrobiol.*, in press.
15. K. E. Duff, M. S. V. Douglas, J. P. Smol, *Nord. J. Bot.* **12**, 471 (1992).
16. T. Nogrady and J. P. Smol, *Hydrobiologia* **173**, 231 (1989).
17. M. S. V. Douglas and J. P. Smol, *J. Phycol.*, in press.
18. W. Blake Jr., *Geol. Surv. Can. Pap.* **78-1C**, 119 (1978).
19. _____, *ibid.* **82-1C**, 104 (1982).
20. The corer was from a design developed by the Snow, Ice, and Permafrost Research Establishment (SIPRE), now the Cold Regions Research and Engineering Laboratory (CRREL).
21. D. J. Conley, *Biogeochemistry* **6**, 161 (1988).
22. W. Blake Jr., *Can. J. Earth Sci.* **29**, 1958 (1992).
23. P. Schledermann, *Crossroads to Greenland* (Komatik Ser. no. 2, Arctic Institute of North America, University of Calgary, Calgary, 1990).
24. J. Blais, personal communication.
25. S. Roy and W. F. Vincent, *Environ. Rev.* **1**, 1 (1993).
26. R. M. Koerner and D. A. Fisher, *Nature* **343**, 630 (1990).
27. R. S. Bradley, *Quat. Sci. Rev.* **9**, 365 (1990).
28. This research was supported by the Natural Sciences and Engineering Research Council of Canada, Polar Continental Shelf Project, Geological Survey of Canada (contribution 12494), Northern Studies Training Program, and the Cape Herschel Project (contribution 50). The ^{210}Pb dating was performed by B. Risto and R. J. Cornett at the Atomic Energy Canada. This paper benefited from comments by R. Bradley, H. J. Birks, R. Scherer, R. Koerner, J. Bourgeois, B. Cumming, and scientists at the Paleocological Environmental Assessment and Research Laboratory.

2 June 1994; accepted 31 August 1994